



Product Overview



Exlar Corporation designs and manufactures electric actuators that deliver an unmatched range of capabilities, power and performance in both linear and rotary configurations. Select from a broad range of products to find the most robust, reliable and cost-effective solution for nearly any motion application. While this overview provides a brief summary of products available from Exlar, you may want to request a copy of the catalog or product brochure for a complete description, specifications and drawings.

Actuators with Embedded Electronics

Tritex II AC Series Linear Actuators

Model	Frame Size mm	Stroke in	Max Cont. Force lbf (kN)	Peak Force lbf (kN)	Max Speed in/sec (mm/sec)
T2M/X075	75	3, 6, 10, 12, 14, 18	1037 (4.6)	2073 (9.2)	13.3 (339)
T2M/X090	90	3, 6, 10, 12, 18	1488 (6.9)	2700 (12.1)	33.3 (848)
T2M/X115	115	4, 6, 10, 12, 18	3224 (14.3)	5400 (24.0)	25 (635)

Tritex II AC Series Rotary Actuators

Model	Frame Size mm	Gear Ratios X:1	Max Output Torque (geared) lbf-in (Nm)	Output Speed rpm
R2M/G075	75	4, 5, 10	1618 (182.8)	4000/ratio
R2M/G090	90	4, 5, 10, 16, 20, 25, 40, 50, 100	2078 (234.8)	4000/ratio
R2M/G115	115	4, 5, 10, 16, 20, 25, 40, 50, 100	4696 (530.4)	3000/ratio

Tritex II DC Series Linear Actuators

Model	Frame Size mm	Stroke in	Max Cont. Force lbf (N)	Peak Force lbf (kN)	Max Speed in/sec (mm/sec)
TDM/X060	60	3, 6, 10, 12	528 (2349)	666 (2963)	33.3 (848)
TDM/X075	75	3, 6, 10, 12, 14, 18	872 (3879)	1190 (5293)	25 (635)

Tritex II DC Series Rotary Actuators

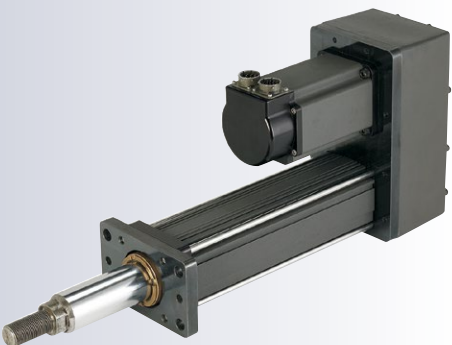
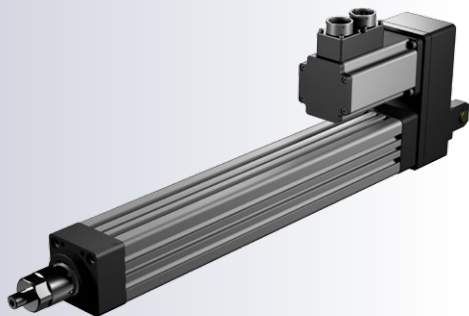
Model	Frame Size mm	Gear Ratios X:1	Max Output Torque (geared) lbf-in (Nm)	Output Speed rpm
RDM/G060	60	4, 5, 10, 16, 20, 25, 40, 50, 100	603 (68.1)	5000/ratio
RDM/G075	75	4, 5, 10	1618 (182.8)	4000/ratio
RDM/G090	90	4, 5, 10, 16, 20, 25, 40, 50, 100	2078 (234.8)	3300/ratio

Actuators with Integrated Roller Screw

GSX/M Linear Actuators

Model	Frame Size mm	Stroke in	Max Cont. Force lbf (kN)	Max Speed in/sec (mm/sec)
GSX/M20	2	3, 6, 10, 12	578 (2.6)	33 (838)
GSX/M30	3	3, 6, 10, 12, 14, 18	1,277 (5.7)	25 (635)
GSX/M40	4	4, 6, 8, 10, 12, 18	3,457 (15.4)	37 (940)
GSX50	5	6, 10, 14	7,150 (31.8)	40 (1016)
GSX60	7	6, 10	11,528 (51.2)	40 (1016)

Our Superior Line of Products includes:



Linear Actuators with Exlar or Customer Motor

K Series Linear Actuators

Model	Frame Size mm	Stroke mm	Max Force lbf (kN)	Max Speed in/sec (mm/sec)
K60	60	20-1225	1,350 (6)	32.8 (833)
K75	75	20-1225	2,500 (1.1)	26.2 (666)
K90	90	20-1225	3,500 (15.6)	19.7 (500)

FT Series Linear Actuators

Model	Frame Size in	Stroke in	Max Force lbf (kN)	Max Speed in/sec (mm/sec)
FT35	3.5	6, 12, 18, 24, 48	5,000 (22.2)	60 (1524)
FT45	4.5	12, 18, 24, 36, 48	10,000 (44.5)	57(1448)
FT60	6	12, 24, 36, 48	20,000 (89.0)	39 (991)
FT80	8	12, 24, 36, 48	40,000 (177.9)	34 (864)

Rotary Motors and Gearmotors

SLM Series Brushless Motor

Model	Frame Size (mm)	Max Cont. Torque lbf-in (Nm)	Max Speed RPM
SLM060	60	15 (1.7)	5000
SLM075	75	36.4 (4.1)	4000
SLM090	90	56 (6.3)	4000
SLM115	115	177 (20.0)	3000
SLM142	142	237 (26.8)	2400
SLM180	180	612 (69.1)	2400

SLG Series Gearmotor

Model	Frame Size (mm)	Gear Ratios X:1	Max Output Torque (geared) lbf-in (Nm)	Output Speed RPM
SLG060	60	4, 5, 10, 16, 20, 25, 40, 50, 100	603 (68.1)	1250
SLG075	75	4, 5, 10	1618 (182.8)	1000
SLG090	90	4, 5, 10, 16, 20, 25, 40, 50, 100	2078 (234.8)	1000
SLG115	115	4, 5, 10, 16, 20, 25, 40, 50, 100	4696 (530.4)	750

Products certified for hazardous locations are also available, please contact Exlar.

Exlar Industrial Actuators
Curtiss-Wright
 18400 West 77th Street
 Chanhassen, MN 55317

Phone: 855.620.6200
 FAX: 952.368.4877
www.exlar.com

